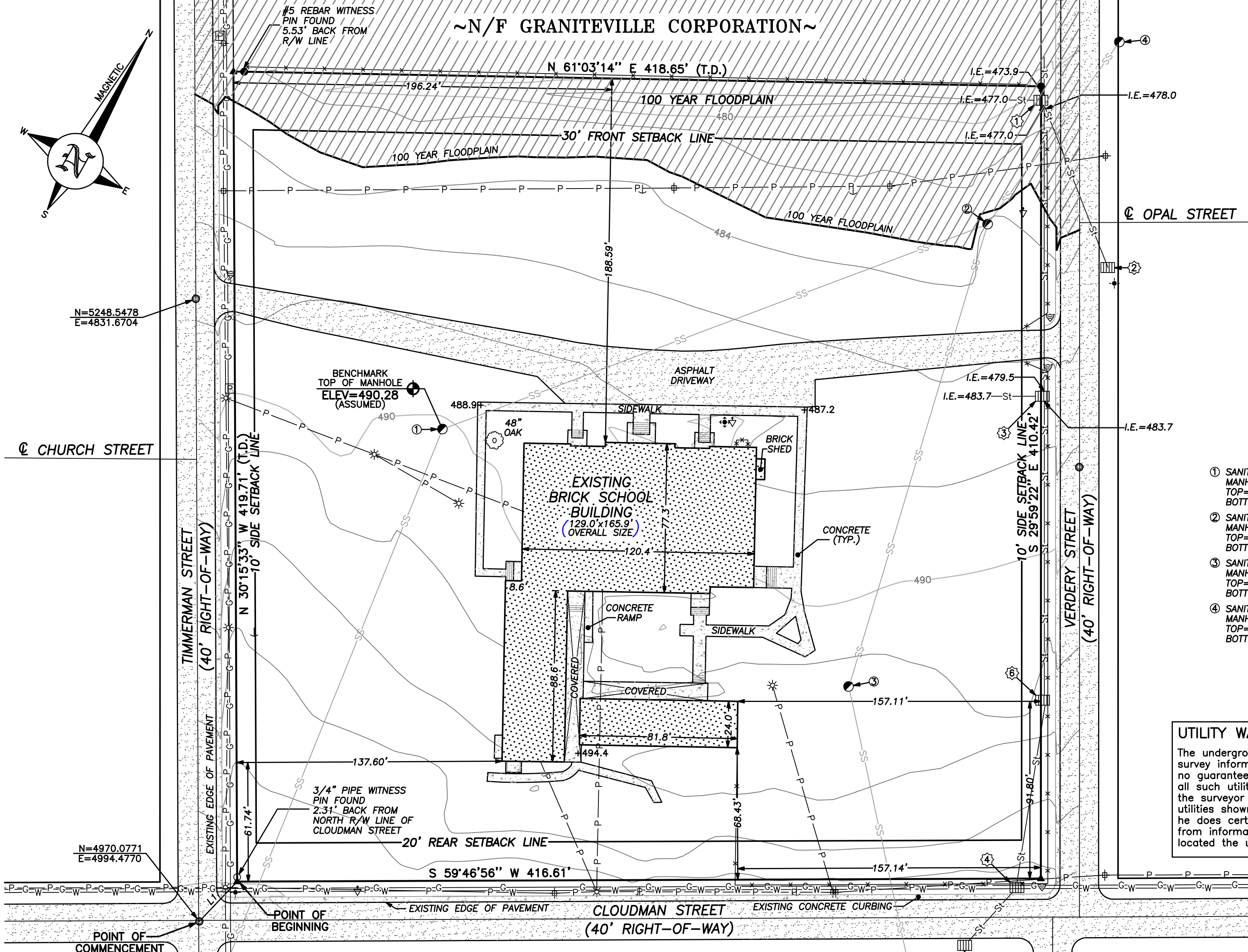


~N/F GRANITEVILLE CORPORATION~

N 61°03'14" E 418.65' (T.D.)

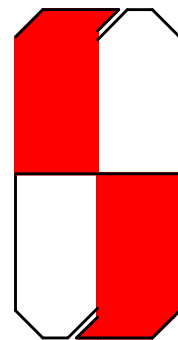
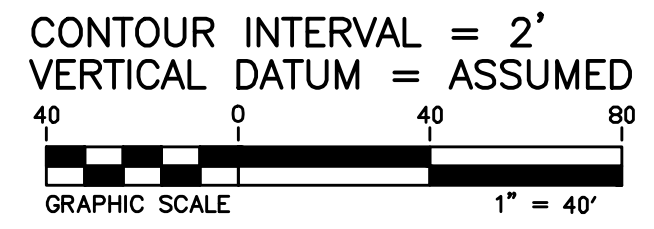


LEGEND	
●	- #5 REBAR FOUND
○	- 3/4" PIPE FOUND
▲	- #4 REBAR SET
⊙	- COTTON SPINDLE SET
▽	- WATER VALVE
⊕	- POWER POLE
↓	- GUY WIRE
✱	- LIGHT POLE
⊕	- FIRE HYDRANT
⊕	- DRY HYDRANT
●	- MANHOLE
▽	- SIGN
▭	- DROP INLET
⊕	- PHONE PEDESTAL
-St-	- UNDERGROUND STORM SEWER LINE
-SS-	- UNDERGROUND SANITARY SEWER LINE
-G-	- UNDERGROUND GAS LINE
-W-	- UNDERGROUND WATER LINE
-P-	- OVERHEAD POWER LINE
-x-	- CHAIN LINK FENCE

- | | |
|---|--|
| ① SANITARY SEWER MANHOLE
TOP=490.3
BOTTOM=486.7 | ① STORM SEWER INLET
TOP=480.8
BOTTOM=474.1 |
| ② SANITARY SEWER MANHOLE
TOP=484.1
BOTTOM=479.6 | ② STORM SEWER INLET
TOP=484.4 |
| ③ SANITARY SEWER MANHOLE
TOP=493.0
BOTTOM=489.9 | ③ STORM SEWER INLET
TOP=487.1
BOTTOM=479.6 |
| ④ SANITARY SEWER MANHOLE
TOP=479.9
BOTTOM=476.4 | ④ STORM SEWER INLET
TOP=498.9 |
| | ⑤ STORM SEWER INLET
TOP=498.8 |
| | ⑥ STORM SEWER INLET
TOP=493.0
BOTTOM=490.5 |

UTILITY WARNING
The underground utilities shown have been located from field survey information and existing drawings. The surveyor makes no guarantee that the underground utilities shown comprise all such utilities in the area, either in service or abandoned. The surveyor further does not warrant that the underground utilities shown are in the exact location indicated although he does certify that they are located as accurately as possible from information available. The surveyor has not physically located the underground utilities.

LINE	DIRECTION	DISTANCE
L1	N 13°35'11" E	28.46'



JOHN A. MCGILL, P.C.
Land Surveying • Land Planning

The Oconee Company, Est. 1897
1961 South Main Street
Greensboro, Ga. 30642
Phone: (706) 453-1913
Fax: (706) 595-1914

McGill And Associates, Est. 1972
934 Shields Pond Road
Thomson, Ga. 30824
Phone: (706) 595-5612
Fax: (706) 595-0971

THE FIELD DATA UPON WHICH THIS PLAT IS BASED HAS A CLOSURE PRECISION OF ONE FOOT IN 17,500 FEET AND AN ANGULAR ERROR OF 2 SECONDS PER ANGLE POINT, AND WAS ADJUSTED USING LEAST SQUARES. ANGLES TURNED BY A TOPCON GTS 3B AND DISTANCES MEASURED WITH A TOPCON GTS 3B.

ALTA/ACSM LAND TITLE SURVEY FOR:
VILLAGE SENIOR APARTMENTS, L.P.
3.98 ACRES
CITY OF WARRENVILLE
AIKEN COUNTY, SOUTH CAROLINA

SURVEY DATE	JUNE 12, 2001
DRAFTING DATE	JUNE 14, 2002
MAP CLOSURE	1/571,103
DRAWN BY	F.C.C.
CHECKED BY	J.A.M.
JOB NO.	G1113
FILE PATH	D:\EPDATA\01\G1113\G1113.DWG
REVISIONS	
SHEET NO.	2 OF 2

